

2023

**INTERNATIONAL  
CONFERENCE ON  
OPHTHALMIC  
PHOTOGRAPHY**



**SS ROTTERDAM**  
14-16 APRIL 2023

ICOP, the International Conference on Ophthalmic Photography, takes place from 14 till 16 April 2023 and is hosted by The Rotterdam Eye Hospital and the Dutch Ophthalmic Photographers Society, in the beautiful city of Rotterdam, The Netherlands!

## CONTENTS

|    |                    |
|----|--------------------|
| 4  | PROGRAM APRIL 14TH |
| 6  | PROGRAM APRIL 15TH |
| 8  | PROGRAM APRIL 16TH |
| 10 | ABOUT ROTTERDAM    |
| 12 | PASSPORTS          |
| 13 | ACCREDITATION      |
| 15 | OUR SPONSORS       |

# Gain more insights into your patient's eye health earlier



Seeing beyond



### ZEISS SL 800 & ZEISS SL Imaging Solution, ZEISS CLARUS 700, ZEISS CIRRUS 6000

The ZEISS SL 800 & ZEISS SL Imaging Solution, ZEISS CLARUS 700, ZEISS CIRRUS 6000 are part of the ZEISS Retina Workflow. By combining premier imaging and at-a-glance history with interactive analysis, ZEISS Retina solutions support both your routine and complex patient management decision processes with an efficient, worry-free and cost effective solution.

[zeiss.com/meditec](https://zeiss.com/meditec)



# PROGRAM APRIL 14TH

SS ROTTERDAM  
08.00 - 16.30

|               |                                                                                                                                                           |
|---------------|-----------------------------------------------------------------------------------------------------------------------------------------------------------|
| 08.00 - 08.55 | <p><b>Enrolment and Photo Submissions I Queens Lounge</b></p> <p>Joining the tour in The Rotterdam Eye Hospital? Please let us know Friday morning.</p>   |
| 08.55 - 09.00 | <p><b>Welcome &amp; Introduction to the ICOP2023</b></p> <p>Gerard de Graaf, OFN, OPS - The Rotterdam Eye Hospital</p> <p>Angela Chappell, OPS, AIMBI</p> |

## THEME: OCT, IMAGING TOOLS, DISEASE SCREENING AND MONITORING, EDUCATION

|               |                                                                                                                                                                                                                                                                                                                                                                                                                                                                                                                                                                                                                                                                                                                                                                                                      |
|---------------|------------------------------------------------------------------------------------------------------------------------------------------------------------------------------------------------------------------------------------------------------------------------------------------------------------------------------------------------------------------------------------------------------------------------------------------------------------------------------------------------------------------------------------------------------------------------------------------------------------------------------------------------------------------------------------------------------------------------------------------------------------------------------------------------------|
| 09.00 - 09.30 | <p><b>Invited Speaker: Central Serosa (Central Serous Chorioretinopathy)</b><br/>dr. Thomas van Rijssen - LUMC - The Netherlands</p>                                                                                                                                                                                                                                                                                                                                                                                                                                                                                                                                                                                                                                                                 |
| 09.30 - 10.30 | <p><b>Scientific Session 1: Imaging for Disease Screening and Monitoring</b><br/>Moderated by Paula Morris, OPS and Wil Barkmeijer, OFN</p> <p><b>09.30</b></p> <p>Do we need FAF imaging as well as OCT for Hydroxychloroquine Screening?<br/>Richard Bell - United Kingdom</p> <p><b>09.45</b></p> <p>The use of virtual clinics to manage diabetic retinopathy patients with delayed follow up appointments in an English hospital eye service<br/>Angela Dale - United Kingdom</p> <p><b>10.00</b></p> <p>Using Ultra Wide Field (UWF) and Optical Coherence Tomography (OCT) modalities to image stable patients in retina observation clinic (ROC)<br/>Darren Ong - Singapore</p> <p><b>10.15</b></p> <p>Reflexivity in Research and Ophthalmic Imaging<br/>Anthony Vukic - United Kingdom</p> |
| 10.30 - 11.00 | <p><b>Coffee break I Queens Lounge</b></p>                                                                                                                                                                                                                                                                                                                                                                                                                                                                                                                                                                                                                                                                                                                                                           |

|               |                                                                                                                                                                                                                                                                                                                                                                                                                                                                                                                                                                                                                                        |
|---------------|----------------------------------------------------------------------------------------------------------------------------------------------------------------------------------------------------------------------------------------------------------------------------------------------------------------------------------------------------------------------------------------------------------------------------------------------------------------------------------------------------------------------------------------------------------------------------------------------------------------------------------------|
| 11.00 - 11.30 | <p><b>Invited Speaker: Vascular Imaging and Eye Tumors: OCT-Angiography and Retinal Oximetry</b><br/>Niels J. Brouwer, MD PhD - LUMC - The Netherlands</p>                                                                                                                                                                                                                                                                                                                                                                                                                                                                             |
| 11.30 - 12.15 | <p><b>Vendor Forum</b><br/>Moderated by Robert Cavicchi, OPS</p>                                                                                                                                                                                                                                                                                                                                                                                                                                                                                                                                                                       |
| 12.15 - 13.15 | <p><b>Lunch &amp; Trade show I Queens Lounge</b></p>                                                                                                                                                                                                                                                                                                                                                                                                                                                                                                                                                                                   |
| 13.15 - 14.15 | <p><b>Scientific Session 2: Imaging tools</b><br/>Moderated by Lisa Breayley, AIMBI and Hanneke Klingsberg-Hoogstede, OFN</p> <p><b>13.15</b></p> <p>Fine-Tuning Your Anterior Photography; Tips and Tricks!<br/>Frank P.J. Smolders - The Netherlands</p> <p><b>13.30</b></p> <p>Look - No Red/Cyan Glasses ! Creating and (Simply) Presenting Stereo Fundus Images<br/>Ethan Priel - Israel</p> <p><b>13.45</b></p> <p>B-scan Ultrasonography as an Ophthalmic Imaging Tool<br/>Jeroen Grimbergen - The Netherlands</p> <p><b>14.00</b></p> <p>The Confocal Tonal Shift<br/>Timothy Bennett - USA</p>                                |
| 14.15 - 14.45 | <p><b>Tea break I Queens Lounge</b></p>                                                                                                                                                                                                                                                                                                                                                                                                                                                                                                                                                                                                |
| 14.45 - 15.45 | <p><b>Scientific Session 3: Role of Photographer and Education</b><br/>Moderated by Colin Clements, OIA</p> <p><b>14.45</b></p> <p>Depending on the Kindness of Strangers - What does Contrast Sensitivity Have to do with Patient Advocacy?<br/>Paula Morris - USA</p> <p><b>15.00</b></p> <p>Ophthalmic Photography in the Netherlands: Past and Present<br/>Jeroen Grimbergen - The Netherlands</p> <p><b>15.15</b></p> <p>Ophthalmic Imaging Education in the UK<br/>Rosalyn Painter - United Kingdom</p> <p><b>15.30</b></p> <p>Ophthalmic Photography in The Rotterdam Eye Hospital<br/>Gerard W. de Graaf - The Netherlands</p> |
|               | <p><b>Rotterdam Eye Hospital Tour</b></p>                                                                                                                                                                                                                                                                                                                                                                                                                                                                                                                                                                                              |

# PROGRAM APRIL 15TH

SS ROTTERDAM  
09.00 - 16.30 - WITH  
AWARDS AND RECEPTION

## THEME: FUNDUS IMAGING, WIDE-FIELD IMAGING, MULTI-MODAL IMAGING

|               |                                                                                                                                                                                                                                                                                                                                                                                                                                                                                                      |
|---------------|------------------------------------------------------------------------------------------------------------------------------------------------------------------------------------------------------------------------------------------------------------------------------------------------------------------------------------------------------------------------------------------------------------------------------------------------------------------------------------------------------|
| 09.00 - 09.30 | <b>Invited Speaker: The Ophthalmic Photographer's Role in Recording the Morphological Changes of Ebola-Specific Retinal Lesions using Spectral Domain Optical Coherence Tomography</b><br>Denise Cunningham - USA                                                                                                                                                                                                                                                                                    |
| 09.30 - 10.15 | <b>Scientific Session 4: Wide-field Imaging</b><br>Moderated by Kasi Sandhanam, OPS<br><br><u>09.30</u><br><br>Ultra-widefield Fundus Photography (UWFP) for Pediatric Retinal Pathology<br>Olivia Rainey - USA<br><br><u>09.45</u><br><br>Growing Beyond - A Guyanese Perspective UWF Imaging in Diagnostic Pathway<br>Joanna Gefferie - United Kingdom<br><br><u>10.00</u><br><br>Utilizing Fundus Autofluorescence for the Peripheral Retina Using Ultra-widefield Imaging<br>Olivia Rainey - USA |
| 10.15 - 10.45 | <b>Coffee break   Queens Lounge</b>                                                                                                                                                                                                                                                                                                                                                                                                                                                                  |
| 10.45 - 11.30 | <b>Invited Speaker: Single Retinal Image Restoration</b><br>Dr. Shuhe Zhang (Tos Berenschot) Maastricht University - The Netherlands                                                                                                                                                                                                                                                                                                                                                                 |
| 11.30 - 12.00 | <b>BOC Board of Certification</b><br>Gary Miller - USA                                                                                                                                                                                                                                                                                                                                                                                                                                               |
| 12.00 - 13.00 | <b>Lunch &amp; Trade Show   Queens Lounge</b>                                                                                                                                                                                                                                                                                                                                                                                                                                                        |
| 13.00 - 13.15 | <b>Conference Photo</b>                                                                                                                                                                                                                                                                                                                                                                                                                                                                              |
| 13.15 - 14.00 | <b>Invited speaker: Automatic Retinal Image Analysis: from thresholding to ChatGPT</b><br>Prof. dr. ir. Clarisa I. Sánchez Gutiérrez<br>University of Amsterdam -<br>The Netherlands                                                                                                                                                                                                                                                                                                                 |

|               |                                                                                                                                                                                                                                                                                                                                                                                                                                                                                                                                                                                                                                                                                  |
|---------------|----------------------------------------------------------------------------------------------------------------------------------------------------------------------------------------------------------------------------------------------------------------------------------------------------------------------------------------------------------------------------------------------------------------------------------------------------------------------------------------------------------------------------------------------------------------------------------------------------------------------------------------------------------------------------------|
| 14.00 - 15.00 | <b>Scientific Session 5: Multi-modal imaging</b><br>Moderated by Eric Kegley, OPS<br><br><u>14.00</u><br><br>OCTA in Mac Tel 2 - New and Complimentary Multi-Modal Imaging Findings<br>Ethan Priel - Israel<br><br><u>14.15</u><br><br>Diagnostic Imaging Hubs (Community Diagnostic Centres): When Image Quality is Everything<br>Peter Holm - United Kingdom<br><br><u>14.30</u><br><br>Studying Enhanced SLO Infra-red Images for Improved OCT / OCTA Scan Selection and Analyses<br>Ethan Priel - Israel<br><br><u>14.45</u><br><br>Heathrow Airport to Diagnostic Hub - Imaging AMD sub retinal implants in Clinical Research Facility<br>Muhammad Elrifly - United Kingdom |
| 15.00 - 15.30 | <b>Tea Break</b>                                                                                                                                                                                                                                                                                                                                                                                                                                                                                                                                                                                                                                                                 |
| 15.30 - 16.30 | <b>Invited speaker: Ophthalmic Jeopardy</b><br>Timothy Bennet<br>Principle Owner at Eye-Pix Education and Consulting                                                                                                                                                                                                                                                                                                                                                                                                                                                                                                                                                             |
|               | <b>Awards and Reception ICOP2023</b><br>Stay to hear if you have won the ICOP2023 Ophthalmic Photo Competition!<br><br>Jury:<br><br>Albert Aandekerk - the first ophthalmic photographer of the Netherlands and world reknown educator<br><br>dr. Thomas van Rijsen - LUMC<br><br>Niels J. Brouwer, MD PhD                                                                                                                                                                                                                                                                                                                                                                       |

# PROGRAM APRIL 16TH

SS ROTTERDAM  
09.00 - 16.00

## THEME: ANTERIOR SEGMENT IMAGING, DEEP LEARNING, RARE AND INTERESTING CASES, HISTORY OF OPHTHALMIC IMAGING

|               |                                                                                                                                                                                                                                                                                                                                                                                                                                                                                                                                                                                           |
|---------------|-------------------------------------------------------------------------------------------------------------------------------------------------------------------------------------------------------------------------------------------------------------------------------------------------------------------------------------------------------------------------------------------------------------------------------------------------------------------------------------------------------------------------------------------------------------------------------------------|
| 09.00 - 10.15 | <p><b>Scientific Session 6: Anterior Segment – Slitlamp + Meibomography</b><br/>Moderated by Rosalyn Painter, OIA</p> <p><b>09.00</b><br/>Slit Lamp Imaging – Past, Present &amp; Future<br/>Steven Thomson – United Kingdom</p> <p><b>09.20</b><br/>Serial Slit Lamp Photography – Taking Control<br/>Angela Chappell - Australia</p> <p><b>09.40</b><br/>Ophthalmic Segmentation and Analysis Software (OASIS) for analysis of meibography images<br/>Beth Ann Benetz – USA</p> <p><b>10.00</b><br/>Deep learning gland segmentation of meibography images<br/>Naomi Joseph – USA</p>   |
| 10.15 - 10.45 | <b>Coffee break   Queens Lounge</b>                                                                                                                                                                                                                                                                                                                                                                                                                                                                                                                                                       |
| 10.45 - 11.30 | <p><b>Scientific Session 7: Anterior Segment 2 – Corneal imaging</b><br/>Moderated by Patricia van Hilten, OFN</p> <p><b>10.45</b><br/>In Vivo Confocal Microscopy of the Abnormal Cornea with Histopathological Correlation<br/>Thaer Alomar – United Kingdom</p> <p><b>11.00</b><br/>Automatic endothelial cell density analysis of donor cornea specular microscopic images<br/>Beth Ann Benetz – USA</p> <p><b>11.15</b><br/>Machine learning analysis of post-keratoplasty specular microscopic endothelial cell images to predict future graft rejection<br/>Naomi Joseph – USA</p> |

|               |                                                                                                                                                                                                                                                                                                                                                                |
|---------------|----------------------------------------------------------------------------------------------------------------------------------------------------------------------------------------------------------------------------------------------------------------------------------------------------------------------------------------------------------------|
| 11.30 - 12.00 | <p><b>History of ICOP</b><br/>Paula Morris &amp; Sarah Armstrong – USA</p>                                                                                                                                                                                                                                                                                     |
| 12.00 - 13.00 | <b>Lunch &amp; Trade Show   Queens Lounge &amp; Meeting to discuss next ICOP</b><br>Interested parties, moderated by Sarah Armstrong, OPS                                                                                                                                                                                                                      |
| 13.00 - 13.30 | <p><b>Invited speaker: On Reflection: Retro-illumination in Veterinary Ophthalmic Photography</b><br/>John Mould – United Kingdom</p>                                                                                                                                                                                                                          |
| 13.30 - 14.15 | <p><b>Invited speaker: Ophthalmic Imaging of Animals – From Mouse to Dolphin</b><br/>Prof. dr. Michael H. Boevé<br/>Utrecht University, The Netherlands</p>                                                                                                                                                                                                    |
| 14.15 - 14.45 | <b>Tea Break</b>                                                                                                                                                                                                                                                                                                                                               |
| 14.45 - 15.30 | <p><b>Scientific Session 8: Rare and Interesting Cases</b><br/>Moderated by Olivia Rainey, OPS</p> <p><b>14.45</b><br/>Blind Photographer<br/>Barbara Klemenc – Slovenia</p> <p><b>15.00</b><br/>Connecting the Dots: A Pediatric Case Presentation<br/>Gary Miller – USA</p> <p><b>15.15</b><br/>Case Report: What's in a Name?<br/>Timothy Bennett – USA</p> |
| 15.30 - 15.45 | <p><b>WRAP UP</b><br/>Prize Drawing for Completed Trade Show Passports</p>                                                                                                                                                                                                                                                                                     |

*Save Travels Back Home!*

# ABOUT ROTTERDAM

LISTEN TO THE LOCALS!

DEAR ICOP VISITOR FROM ABROAD! THE ADVENTURE IS ABOUT TO START IN ROTTERDAM.



## AFTER ARRIVAL AT SCHIPHOL

Follow the signs 'Trains' at the Airport. Four times an hour the 'Intercity Direct' brings you in 30 minutes to the Central Station of Rotterdam. Tickets can be booked through the NS website in advance ( Individual tickets | Products (ns.nl) ) or locally in the railway station on one of the yellow ticket machines.



## TRANSPORT IN ROTTERDAM

The RET is providing local transport with metro's, trams and buses. See [www.ret.nl](http://www.ret.nl)



## TULIPS AND TREES!

Rotterdam has interesting architecture, both very old and very modern. City Rotterdam Tours | Stadswandelingen en Fietstours in Rotterdam gives the possibility to enjoy by walking tours or, if you like, by bicycle.



## LEUVEHAVEN ROTTERDAM

The Rotterdam port has always been very important over many centuries. Leuvehaven is the location of the Maritime Museum. You can visit the building or limit yourself to the free acces open air area (just behind the Eye Hospital). Easy to reach from SS Rotterdam with the Watertaxi.



## GETTING THIRSTY?

Rotterdam has a number of craft beer breweries, tasting is possible on site. At walking distance of SS Rotterdam you find Brouwerij Kaapse Kaap (Nico Koomanskade 1025) where you can taste the beer in the brewery. Want more choice? Visit café Reijngoud (next to the Eye Hospital at Schiedamse Vest), they have 140 beers available. There is plenty of choice of good restaurants.



## NICE TO VISIT

Go to Hotel New York  
Go to the Fenix Food Factory

---

## PASSPORTS

---

PLEASE TAKE A MOMENT TO STOP BY EACH OF OUR SPONSOR'S EXHIBIT SPACE. AFTER YOU LEARN ABOUT THE LATEST THEY HAVE TO OFFER, ASK THEM TO SIGN OR STAMP YOUR PASSPORT. ONCE YOU'VE RECEIVED A SIGNATURE / STAMP FROM EACH SPONSOR, ENTER YOUR PASSPORT (NAME) FOR THE DRAWING.



ZEISS



TOPCON HEALTHCARE



HEIDELBERG ENGINEERING



OPTOS



HAAG STREIT GROUP



LASERVISION

---

## ACCREDITATION

---

ICOP2023 HAS BEEN APPROVED FOR 15.5 OPS CECS

FOR INTERESTED ATTENDEES, PLEASE FILL OUT THE SURVEYS HERE:

[HTTPS://WWW.OPSWEB.ORG/PAGE/CEC\\_ICOP\\_2023](https://www.opsweb.org/page/cec_icop_2023)

ICOP2023 IS ACCREDITED FOR OPHTHALMOLOGISTS IN THE NETHERLANDS WITH 6 POINTS PER DAY - WITH A MAXIMUM OF 18 POINTS FOR 3 DAYS - BY THE NETHERLANDS OPHTHALMOLOGICAL SOCIETY (NOG).

## COLOPHON

ICOP2023

HOSTED BY THE ROTTERDAM EYE HOSPITAL

ICOP IS A PARTNERSHIP OF FOUR IMAGING SOCIETIES: THE OPHTHALMIC PHOTOGRAPHERS' SOCIETY (US), THE OPHTHALMIC IMAGING ASSOCIATION (UK), THE AUSTRALIAN INSTITUTE OF MEDICAL & BIOLOGICAL ILLUSTRATION (AU) AND THE DUTCH OPHTHALMIC PHOTOGRAPHERS SOCIETY (NL). ICOP2023 IS THE PLACE TO BE TO MEET YOUR PEERS FROM ALL OVER THE GLOBE AND SHARE KNOWLEDGE AND EXPERIENCE!

ICOP2023 ORGANIZING COMMITTEE

ANGELA CHAPPELL

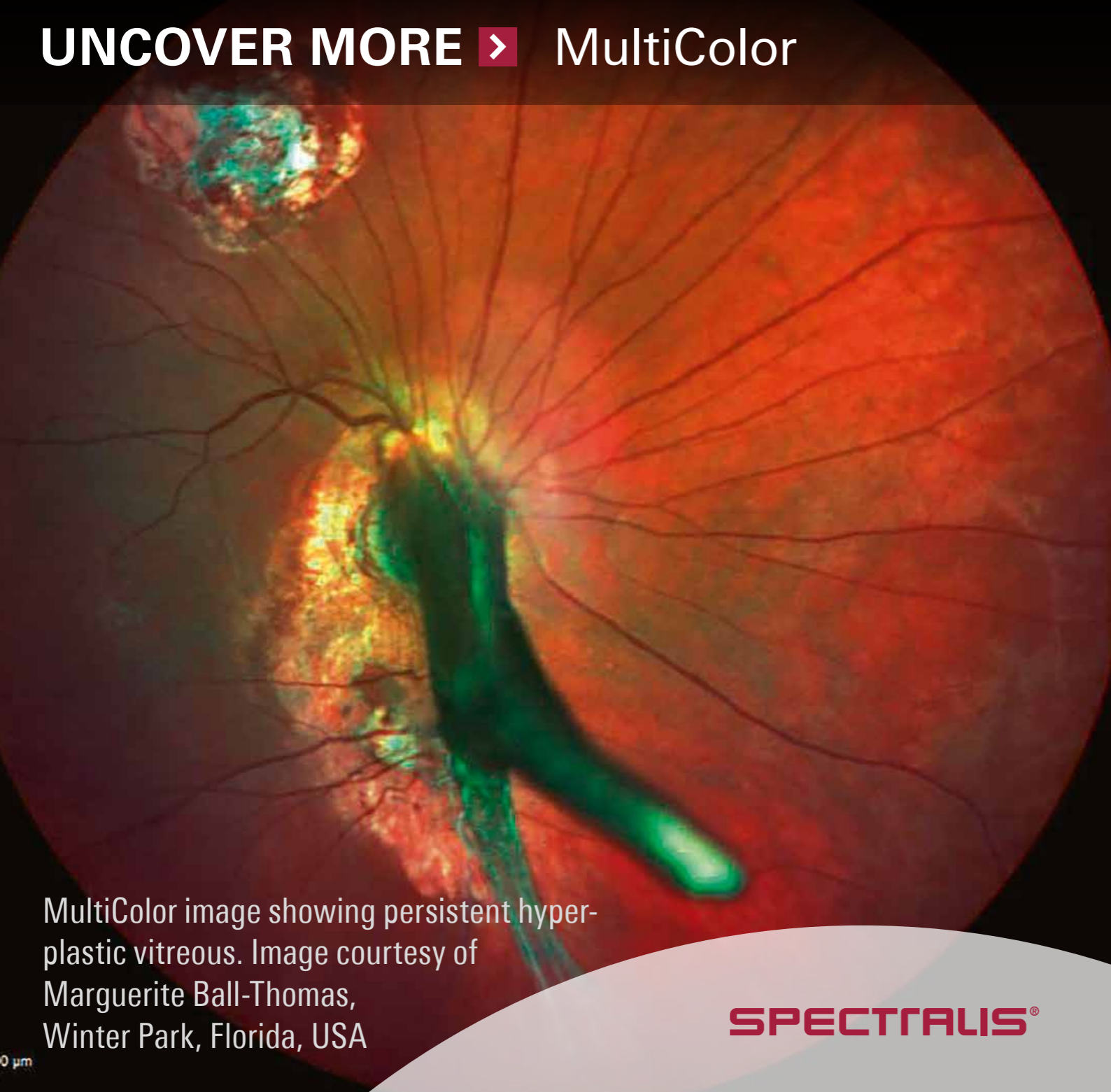
SARAH ARMSTRONG

WIL BARKMEIJER

HANNEKE KLINGENBERG - HOOGSTEDE

GERARD DE GRAAF

WITH HELP FROM MAAIKE VAN ZUILEN AND HER TEAM






MultiColor image showing persistent hyperplastic vitreous. Image courtesy of Marguerite Ball-Thomas, Winter Park, Florida, USA

SPECTRALIS®

### Multispectral fundus imaging

SPECTRALIS® MultiColor adds a new dimension to color imaging.

> Uncover more:  
[spectralis-multicolor.com](http://spectralis-multicolor.com)

-  Topographic detail
-  Discrimination of structures
-  Deeper diagnostic insight

HEIDELBERG ENGINEERING

## OUR SPONSORS

THANK YOU!!

### EUROMAST PACKAGE

Gold Sponsor



Seeing beyond

### MARKTHAL PACKAGE

Silver Sponsors



### CUBE HOUSE PACKAGE

Bronze Sponsors



Look closer. See further.





